

POP-UP SOCKET



- Water and dust proof protective
- Retractable, convenient to use & tidy up the wires



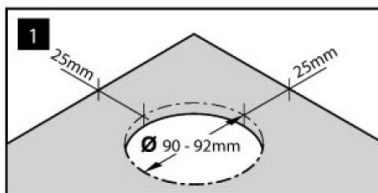
- Universal standard, Max DC 5V 2100mA
- Built-in 2xUSB charging ports
- Ideal for charging cell phones, tablets, iPhone 6 Plus, iPad Air, MP3/MP4 players or other electronic devices.



- Renewable fuse cartridge
- To interrupt excessive current to prevent further damage by overheating or fire

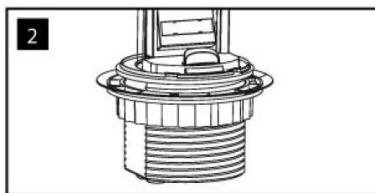


How to install

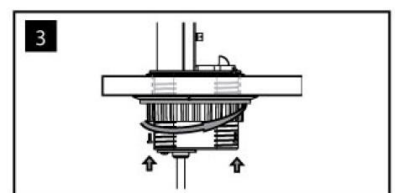


Cut out 90-92mm diameter hole in work surface. Allow minimum 25 mm clearance around the cut hole. When choosing location, select a surface between 10mm and 50mm thick.

Attention: Ensure there is sufficient space under the installation surface, for the unit when it retracts to the closed position.

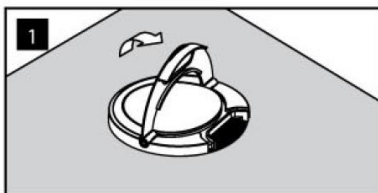


The locking ring with rubber washer is supplied in the packaging. If attached to the mounting collar, remove it by rotating it in anti-clockwise direction prior to lowering the unit into its final location.

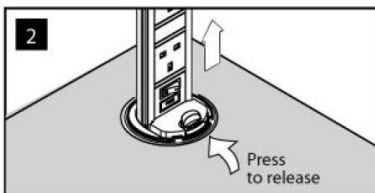


Place locking ring into collar. Identify and align arrows on the collar and locking ring to ensure the thread is engaged properly. Turn the locking ring clockwise to tighten. Make sure rubber washer is compressed tightly on underside of surface. Tighten the screw until ring firmly grips the surface.

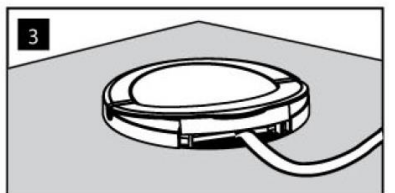
How to operate



To use the Pop-up Socket, gently lift up the handle on the top cover until all socket outlets are exposed and the orange stop/release button clicks and locks the unit in place.



Press the master switch on. A neon light confirms that power is available. You can use all power sockets. The unit can be retracted in position by pressing the orange stop/release button and push the unit down until it's flush with the surface, and leaving the engaged cables on the window off the top cover.



Insert Pop-up Socket into the hole to discreetly hide away when not in use.